



**2 Corinth Court St. Pauls On The Green, Haywards Heath, West Sussex, RH16 3HB**

**£1,250 Per Calendar Month**

[www.psphomes.co.uk](http://www.psphomes.co.uk)



**\*\* BLOCK VIEWINGS 5TH MAY 2022 \*\* MODERN CONVENIENCE |** An excellent two bedroom apartment situated on the sought after St. Pauls On The Green development. Convenient location with allocated parking. Offered unfurnished and available now.

### The Apartment

A modern, two bedroom Apartment situated in the sought after 'St. Paul's On The Green', close to the town centre and mainline station. The property is presented in good order throughout and has been recently redecorated and new carpets throughout. This ground floor accommodation includes a sitting room, stylish kitchen with integrated appliances, with two double bedrooms, the master with an en suite shower and a separate modern bathroom.

Further benefits include gas fired central heating, double glazing throughout and allocated parking.

### Location

St. Pauls on the Green is a recently built (2008) and most sought after development located off of Oathall Avenue - convenient for the town centre, mainline station and good schools including Oathall Community College. The houses are situated around an attractive central green with a small playground.

Haywards Heath mainline station is within walking distance (approx 10 mins) and boasts fast & regular commuter services to London (Victoria/London Bridge both 47 mins), Gatwick International Airport and Brighton. By road, access to surrounding areas can be gained via the B2112, A272 and A23(M), the latter lying approximately 5½ miles to the west at either Bolney or Warninglid.

### Information

Permitted Fees:

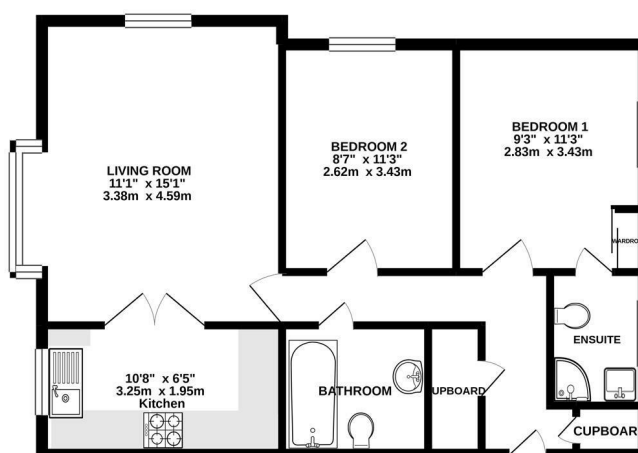
Holding deposit - one weeks rent

Deposit - five weeks rent

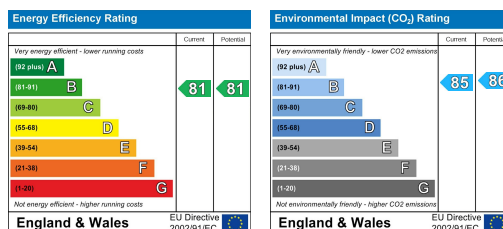
The holding deposit will be refunded against the first month's rent but can be retained if the applicant withdraws from the property, fails the reference checks due to false or misleading information or fails the Right to Rent checks.

Council Tax Band C

GROUND FLOOR  
626 sq.ft. (58.2 sq.m.) approx.



TOTAL FLOOR AREA : 626 sq ft. (58.2 sq.m.) approx.  
Whilst every attempt has been made to ensure the accuracy of the floorplan contained here, measurements of doors, windows, rooms and any other items are approximate and no responsibility is taken for any error, omission or misstatement. This plan is for illustrative purposes only and should be used as such for only prospective purchase. The services, systems and appliances shown have not been tested and no guarantee as to their quality or efficiency can be given.  
Made with floorplan 10/2021



VIEWING BY APPOINTMENT WITH PSP HOMES

3 Muster Green South, Haywards Heath, West Sussex, RH16 4AP. TELEPHONE 01444 416999

OPEN SEVEN DAYS A WEEK [www.psphomes.co.uk](http://www.psphomes.co.uk)

Much care is taken in the preparation of our particulars, but we cannot guarantee the information given is accurate. Property details are issued a general guide only and may not form any part of an offer or contract. We recommend intending purchasers check details personally.